

European Interoperability Framework

7 Sep 2017

Konstantinos Bovalis

Konstantinos.bovalis@ec.europa.eu

Deputy Head of the Interoperability Unit

Directorate-General for Informatics

European Commission

INSPIRE 2017

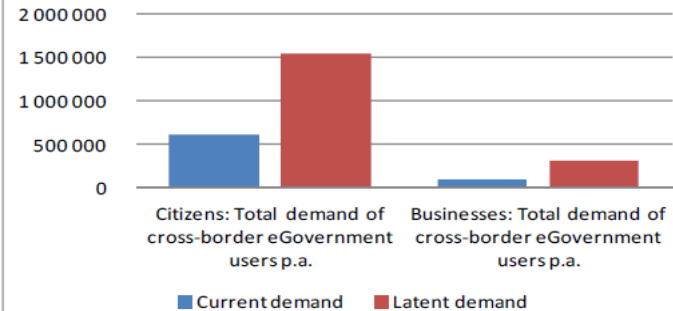
A diagram on a blue background with a network of white lines and nodes. Four circular icons are connected to a central node: a group of people, a building, a clock tower, and a briefcase.

Citizens & businesses on the move



Citizens active in another Member State as	
Workers	7.1 million (2013)
Students	571 000 (2010)
Residents	18.5 million (2014)
Tourists	223 million visits (2015)
Consumers	19% of online shoppers (2015)
Migrants between the Member States	1.3 million (2014) intra-EU
SMEs active in another Member State as	
Exporters	5.5 million (26 % of SMEs, 2009)
Investors	500 000 (2009)
Subcontractors	1.4 million (2009)

Total demand for cross-border Online Services



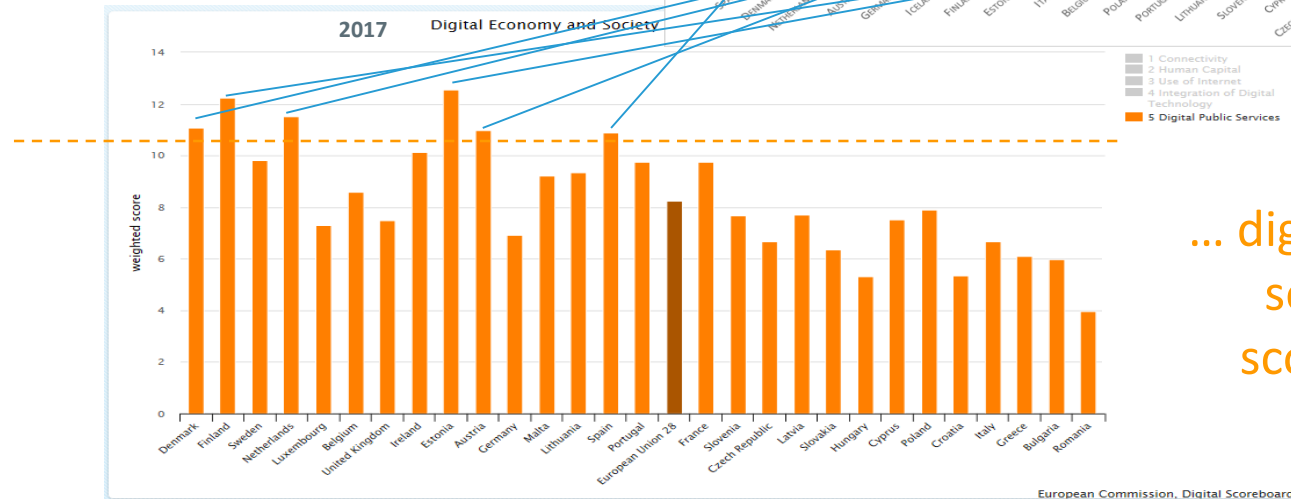
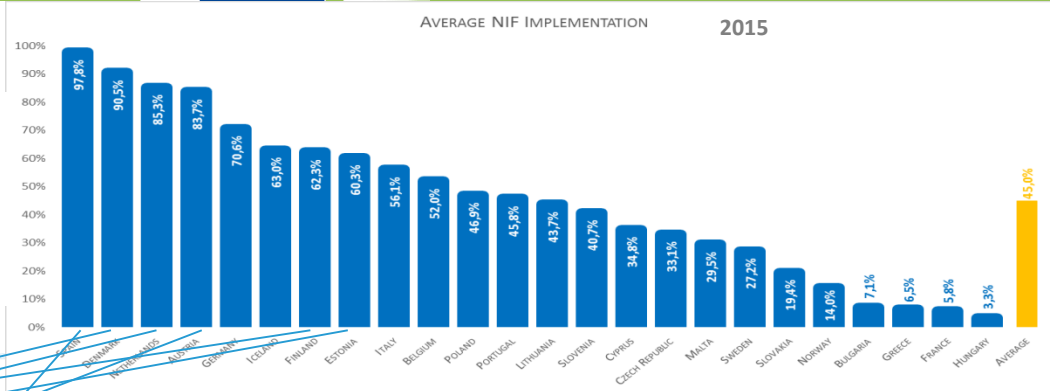
Tinholt, D., et al., *Study on Analysis of the Needs for Cross-Border Services and Assessment of the Organisational, Legal, Technical and Semantic Barriers*, Capgemini et al. for the European Commission, 2012

Digital public services

Current landscape



where
interoperability
scores high ...



... digital public
services
score high



So far so good ...

EU & national



2014 alignment

There is an overall very good NIF-EIF alignment
across countries for 2014

Domain specific

- e-Health interoperability framework
- eIDAS Regulation – interoperability framework for mutual recognition of IDs
- **INSPIRE Directive, location interoperability**
- Connecting Europe Facility building blocks

Support by





EU Institutions and Member States to implement



Communication, COM(2017) 134, 23 Mar 2017

"European Interoperability Framework – Implementation Strategy"

Annex 1: **Interoperability Action Plan** (5 focus areas, 22 actions)

Annex 2: The **European Interoperability Framework**

(mainly) supported by ISA²



Alignment with policy development

- Digital Single Market (EIF revision in the Roadmap)
- **INSPIRE Directive**
- Revised Directive on Public Sector Information
- eIDAS Regulation
- e-Government Action Plan 2016-2020



Alignment with emerging trends

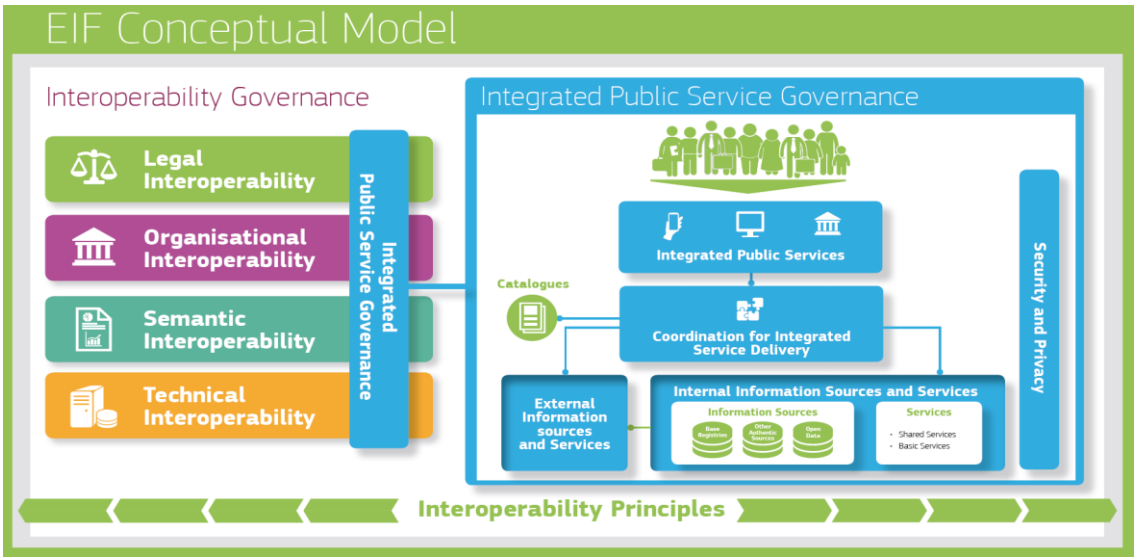
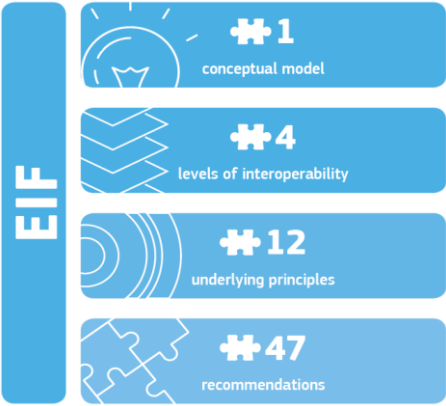
- Interoperability governance
- Integrated service delivery
- Data/Information management
- European Interoperability Reference Architecture
- Security & privacy



More focus on EIF implementation

- More concrete recommendations
- Point to specific solutions that can facilitate implementation
- Interoperability Action Plan

EIF 2017 – structure





The INSPIRE Directive is an important domain-specific illustration²⁰ of an interoperability framework including legal interoperability, coordination structures and technical interoperability arrangements.

Recommendation 2:

Publish the data you own as open data unless certain restrictions apply.

Recommendation 4:

Give preference to open specifications, taking due account of the coverage of functional needs, maturity and market support and innovation.

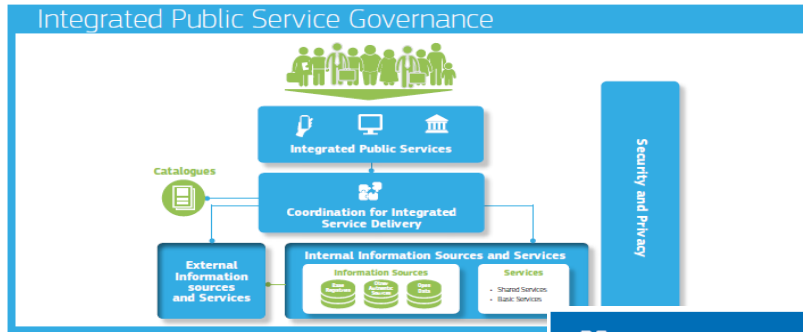
Recommendation 6:

Reuse and share solutions, and cooperate in the development of joint solutions when implementing European public services.

Recommendation 7:

Reuse and share information and data when implementing European public services, unless certain privacy or confidentiality restrictions apply.

Figure 4 Conceptual model for integrated public services



Use specs such as
DCAT-AP (or extensions i.e.
GeoDCAT-AP), CPSV, ADMS
to describe open data,
public services and
interoperable solutions

✚ **Recommendation 42:**

Publish open data in machine-readable, non-proprietary formats. Ensure that open data is accompanied by high quality, machine-readable metadata in non-proprietary formats, including a description of their content, the way data is collected and its level of quality and the licence terms under which it is made available. The use of common vocabularies for expressing metadata is recommended.

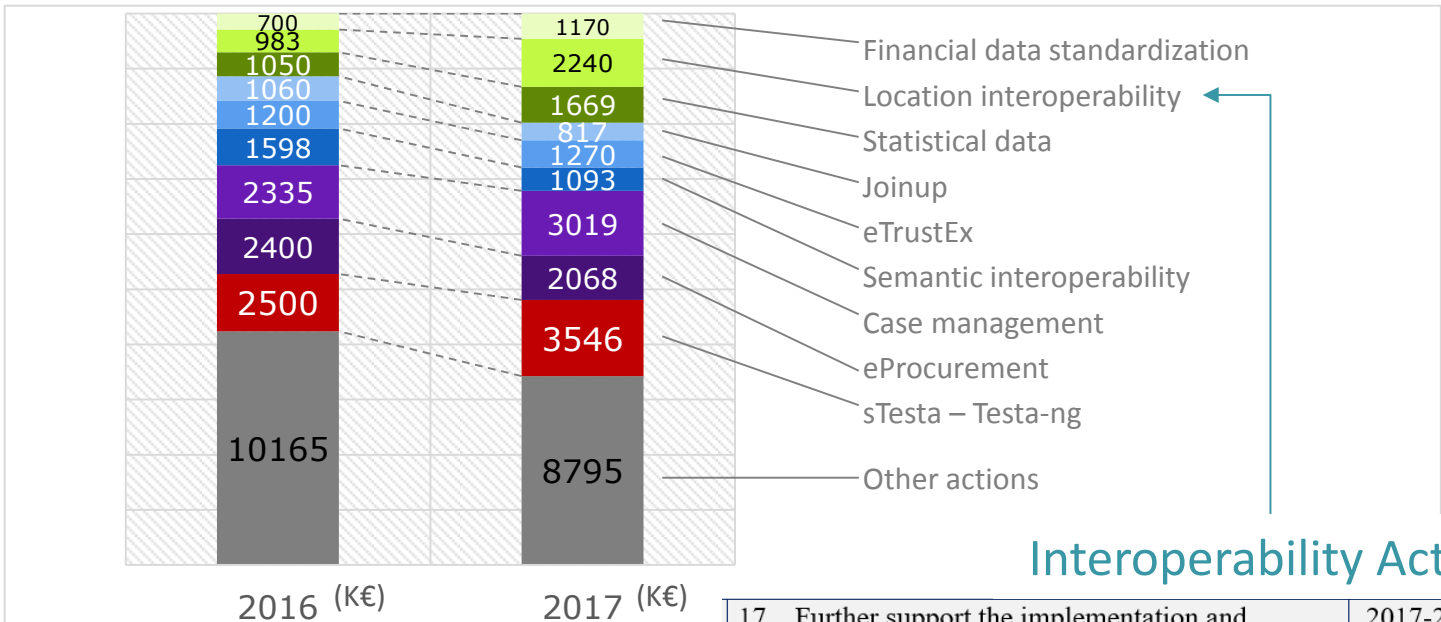
✚ **Recommendation 44:**

Put in place catalogues of public services, public data, and interoperability solutions and use common models for describing them.

Action Plan and ISA²



ISA² Work Programme



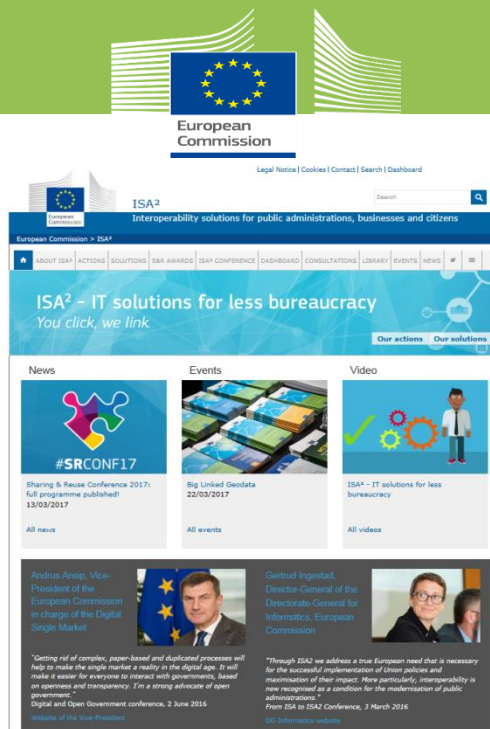
Interoperability Action Plan

17. Further support the implementation and enhancement of the INSPIRE Directive through the use of geospatial data in digital public services.	2017-2020	EC, MS
--	-----------	--------

What's next?



- Oct 2017 ministerial declaration on eGovernment, EE presidency: EUs and Member States to commit - among other eGov related things - on EIF implementation
- ISA² to continue supporting + monitoring the EIF (evaluation by end-2019) including INSPIRE related actions
- Commission to reflect on how '*digital and interoperable public administrations*' fit into the post 2020 MFF



Join ISA initiatives at: ec.europa.eu/isa2
and joinup.ec.europa.eu



joinup