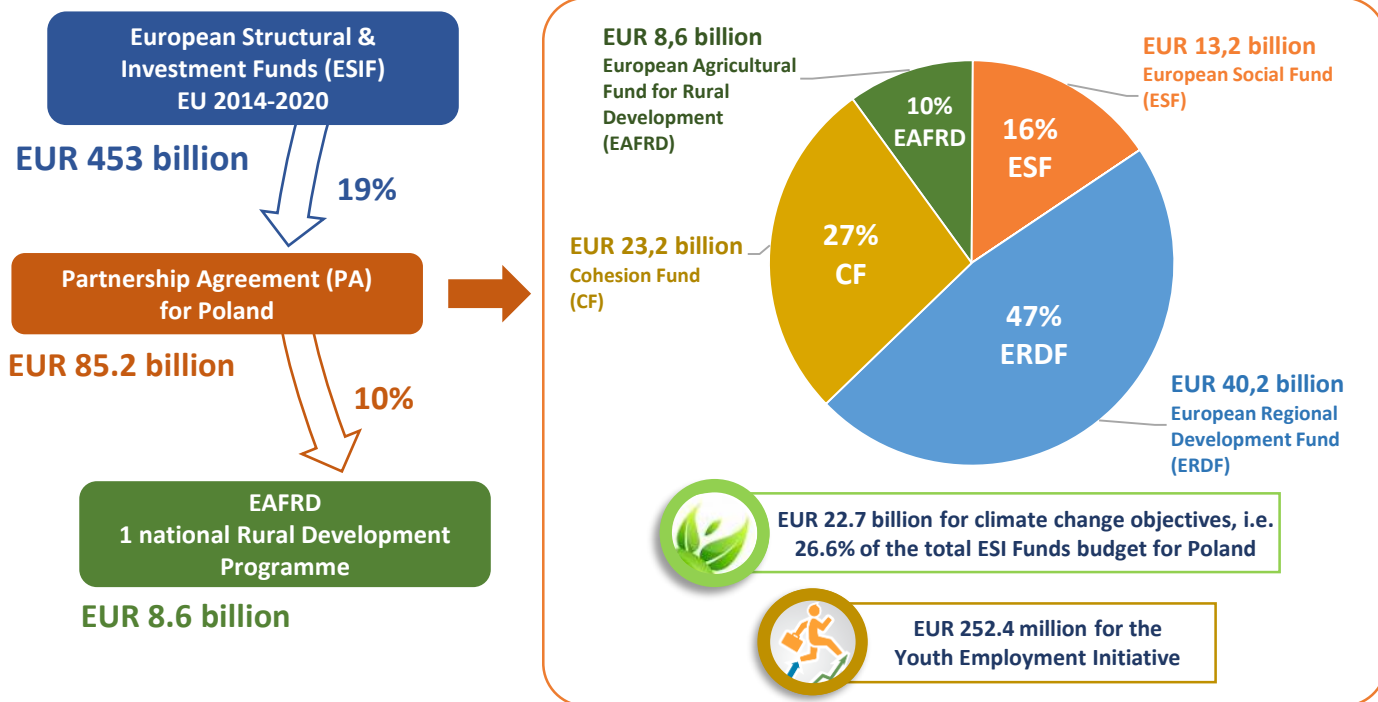
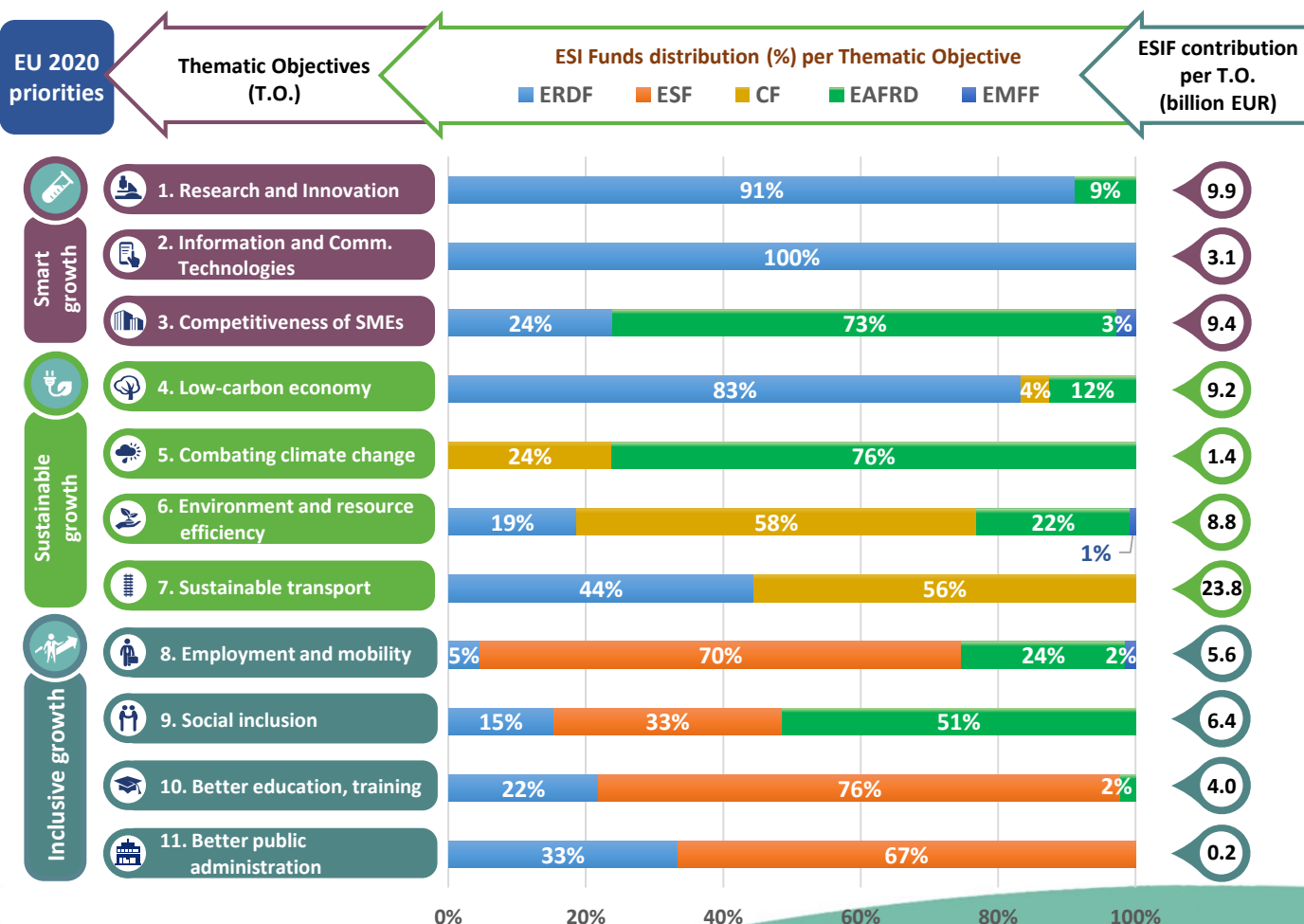


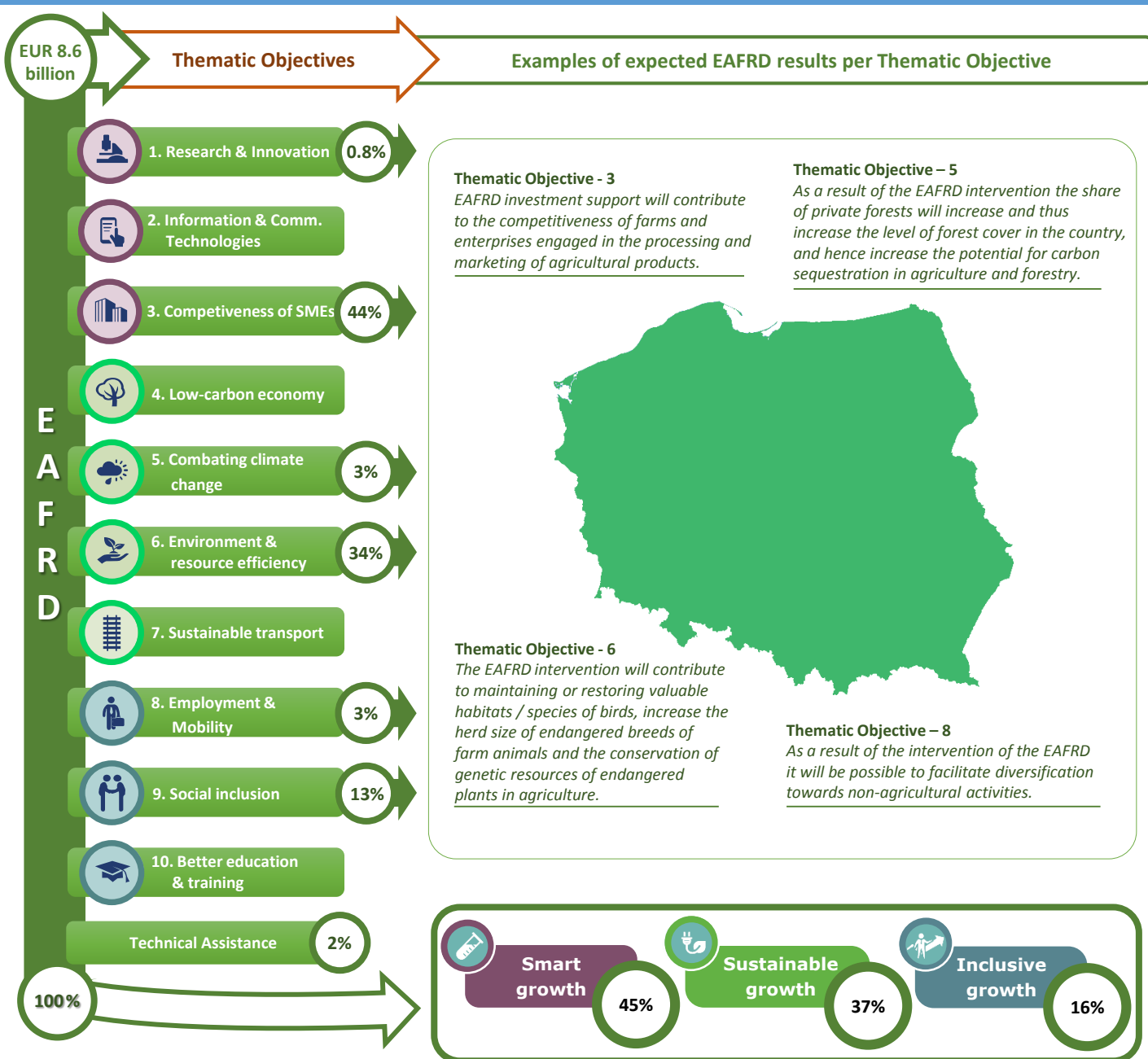
# POLAND



## Thematic objectives supported in Poland and ESIF contributions



# EAFRD allocation per Thematic Objective & expected results



## Integrated approaches to territorial development in rural areas

### Community Led Local Development (CLLD) / LEADER

**CLLD/LEADER funding in Poland:** Minimum 5% of the total EAFRD budget.

**Multi-funded Local Development Strategies:** Yes. CLLD can take 3 forms: direct (allocation of funding to an integrated strategy), indirect (LAGs can apply for individual projects) or mixed. As regards the EAFRD and EMFF, CLLD will be implemented through the direct formula.

**Rural areas population limits:** Areas with population between 30 000 and 150 000 inhabitants.

Responsible body:	Ministry of Infrastructure and Development
Date of PA approval:	23/05/2014

**Please note:** The data and figures presented in this summary come from the European Commission approved version of the PA for Poland. The information provided in this summary should not be considered a comprehensive account of the original PA content. For the full information please see the original document.

For more information please visit: [http://ec.europa.eu/contracts\\_grants/agreements/index\\_en.htm](http://ec.europa.eu/contracts_grants/agreements/index_en.htm)