



European Rural Networks' Assembly

RNs' activities update and actions for 2020: ENRD Evaluation Helpdesk

Hannes WIMMER, Team Leader

6th Meeting of the European Rural Networks' Assembly
Brussels, 16 December 2019



POWERED BY

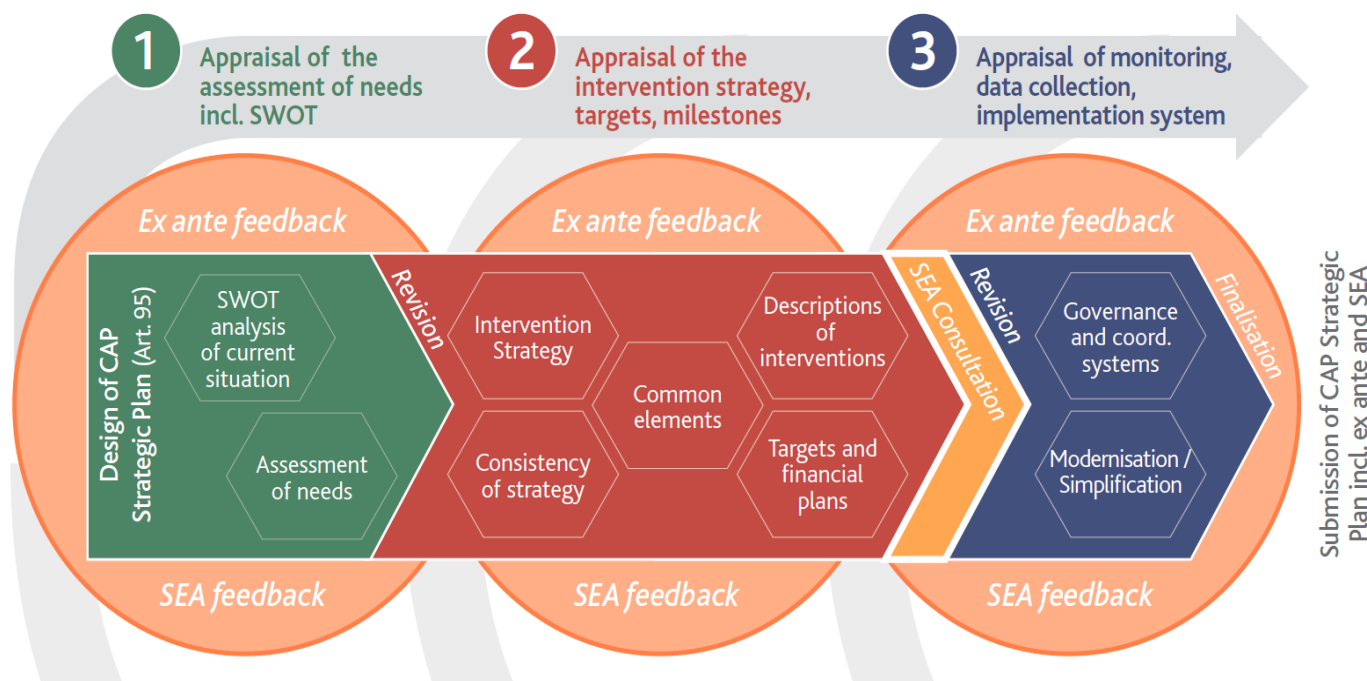




Recent and ongoing activities



Tools to support the ex-ante evaluation of the CAP Strategic Plan



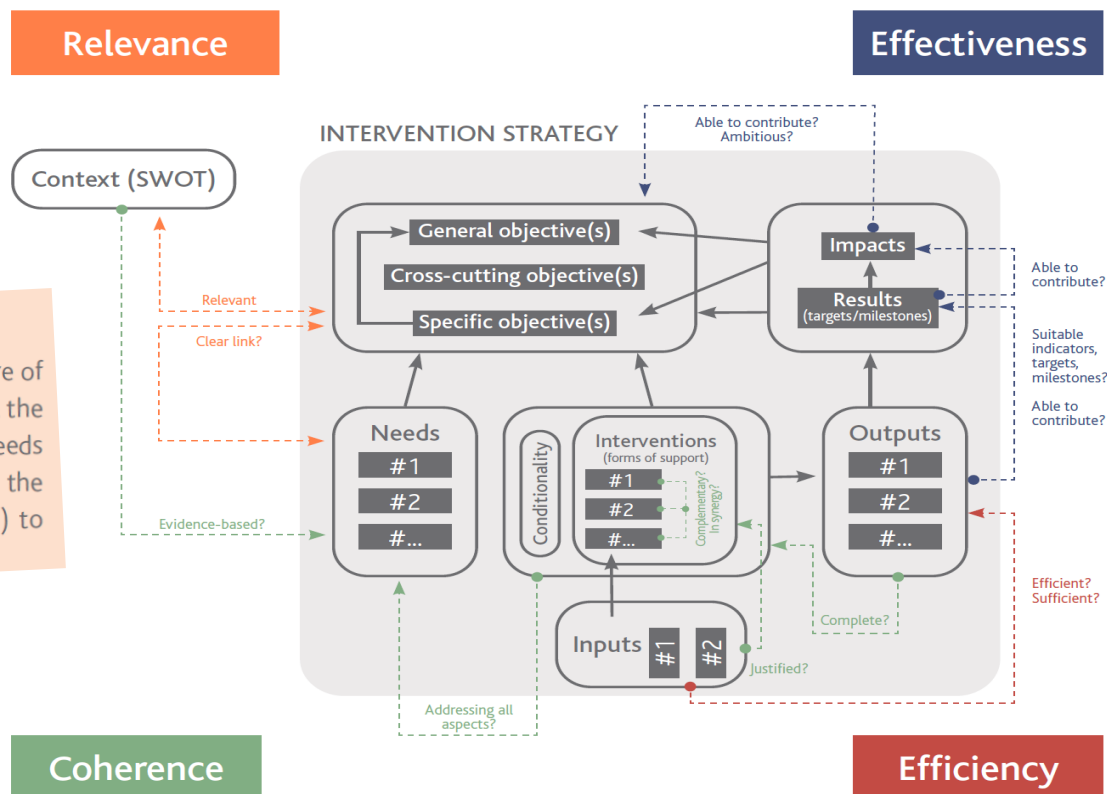
Read more:

Thematic Working Group 7 – Preparing for the Ex-ante Evaluation of the CAP Strategic Plan.



Key ideas for appraising your intervention strategy...

The intervention strategy (intervention logic) is at the core of EU support programmes as it shows the logical link between the problem that needs to be tackled (or the objective that needs to be pursued), the underlying drivers of the problem and the available policy options (or the EU actions actually taken) to address the problem or achieve the objective.



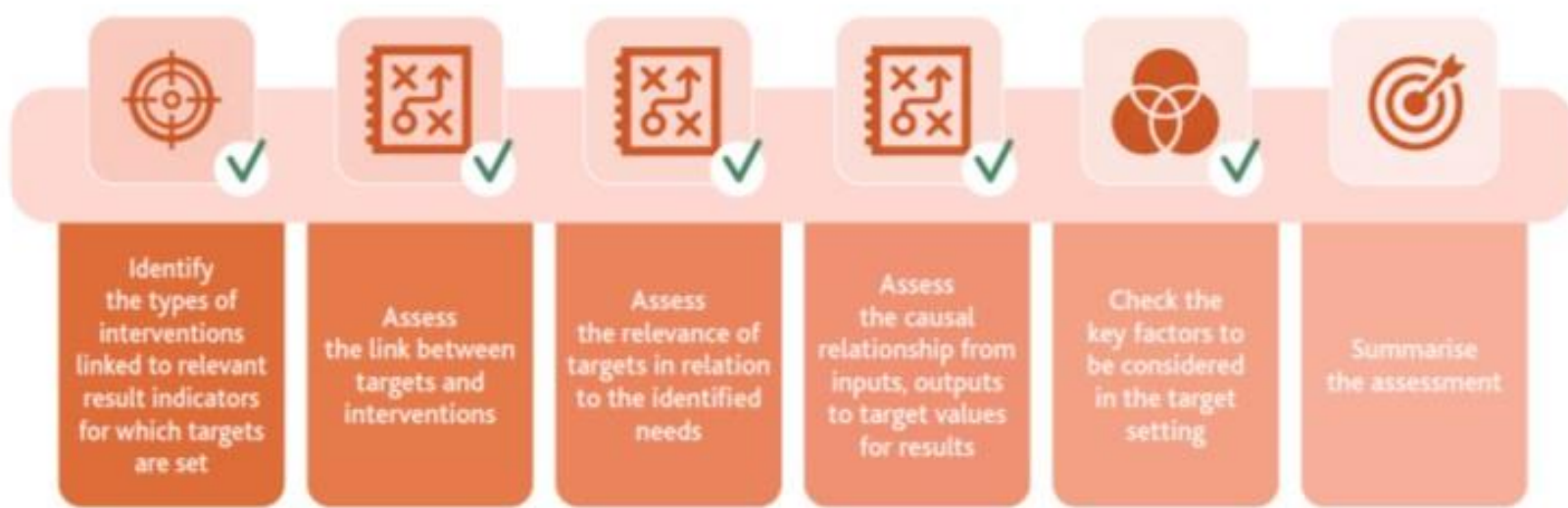
Read more:

Thematic Working Group 7 - Tool 3.1 Examples of guiding questions for the appraisal of the intervention strategy, targets and milestones.





Steps for structuring the appraisal of quantified target values and milestones...



Read more:

Thematic Working Group 7- Tool 3.3 Appraisal of quantified target values and milestones.



Stakeholders' lessons on appraising the intervention strategies, targets, milestones...



'My vision is that every policy designer should have an impact model on the wall, printed in large format, which has to be improved more and more over the years.'

Evaluator, Austria

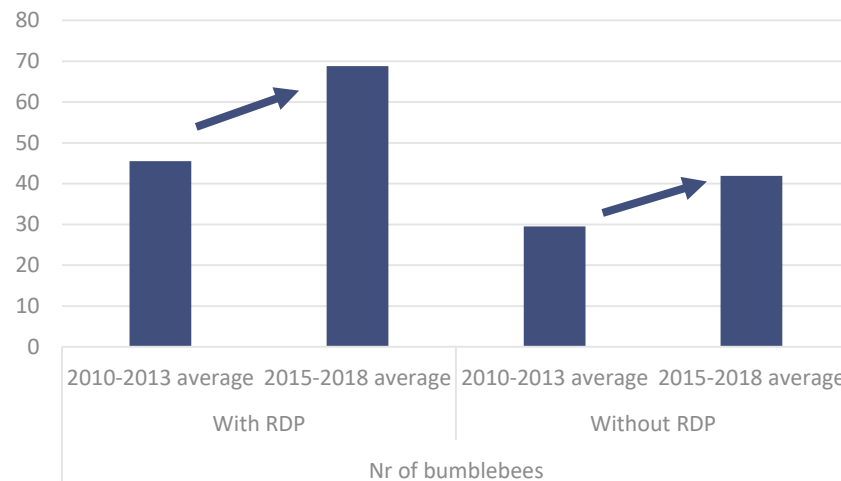
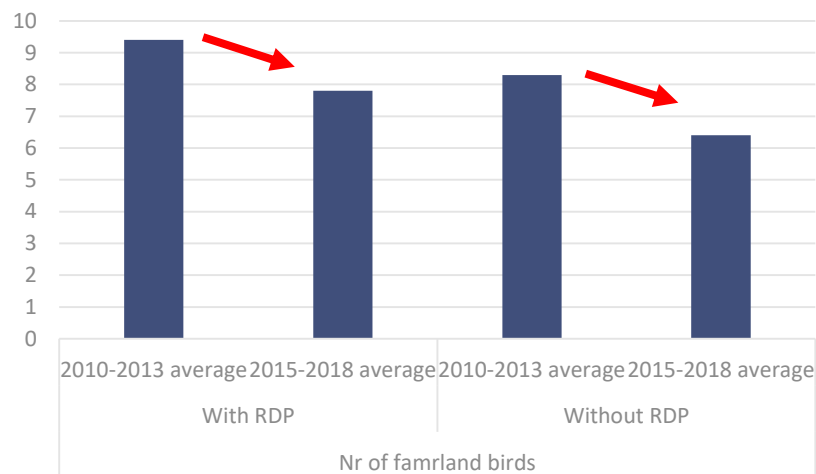


Read more:

Appraising Intervention Strategies Under the CAP: Experiences and Outlook. Good Practice Workshop Rome, 15-16 October 2019



Stakeholders' lessons on assessing RDP achievements and impacts in 2019



'Caution with making conclusions based on one indicator – different indicators may give different results (e.g. bumblebees vs farmland birds'. Evaluator, Estonia.



Read more:

How to demonstrate RDP achievements?

Reporting of evaluation findings, indicators, lessons for ex post. Good Practice Workshop Sevilla, 11-12 December 2019



Building evaluation capacities in the Member States...

EvaluationWORKS! 2019

- 'AIR 2019 reflections and follow-up'
- 'Introduction to the PMEF for the CAP post 2020'
- 'Ex ante evaluation of the CAP Strategic Plan'



Read more:

Capacity Building section on the Evaluation Helpdesk website.

Synthetising the evaluations findings of the AIRs in 2019...



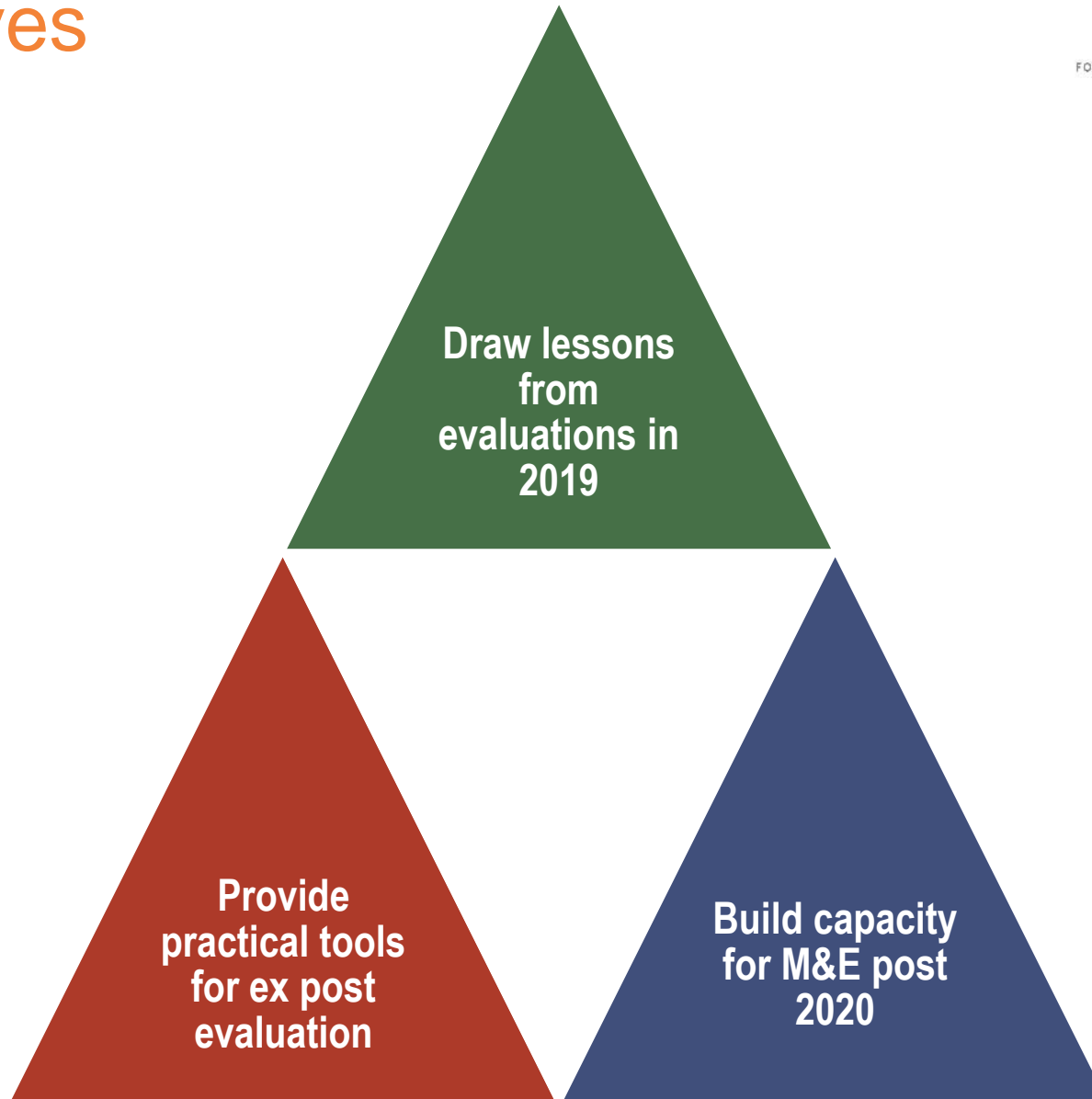
Read more:

[Summary Reports of the evaluation components of the AIRs 2019 and European Commission's Staff Working Document \(December 2019\)](#)



Annual Work Programme 2020

Objectives





Ex post evaluation of RDPs 2014-2020: learning from practice

Objectives

- Address **weaknesses** in assessment of RDP achievements
- Improve calculation of **complementary result and impact indicators**
- Tackle **emerging issues** in the assessment of priority areas (e.g. environment, climate)



Improving evidence-based RDP evaluations in view of the ex-post

Topics

- Following up on the lessons from the evaluations in 2019
- Overcoming the challenges in data/indicators
- Addressing specific priority areas for the ex post evaluation

Good Practice Workshops



Assessing RDP effects (topic tbc)

Q2

Improve reporting on RDP achievements and impacts in priority area (topic linked to TWG-8)



Preparation of the evaluation activities for the CAP post-2020

Q3

Planning evaluation needs, data needs, data management



Evaluation under the CAP

Q4

Concepts, process and use of evaluation under Pillar 1 and 2

EUROPEAN
EVALUATION
HELPSDESK
FOR RURAL DEVELOPMENT





Thank you for your attention!

European Evaluation Helpdesk for Rural Development
Boulevard Saint Michel 77-79
B-1040 Brussels
Tel. +32 2 7375130
E-mail info@ruralevaluation.eu
<http://enrd.ec.europa.eu/evaluation>