

ENRD Thematic Group on Rural Revitalisation

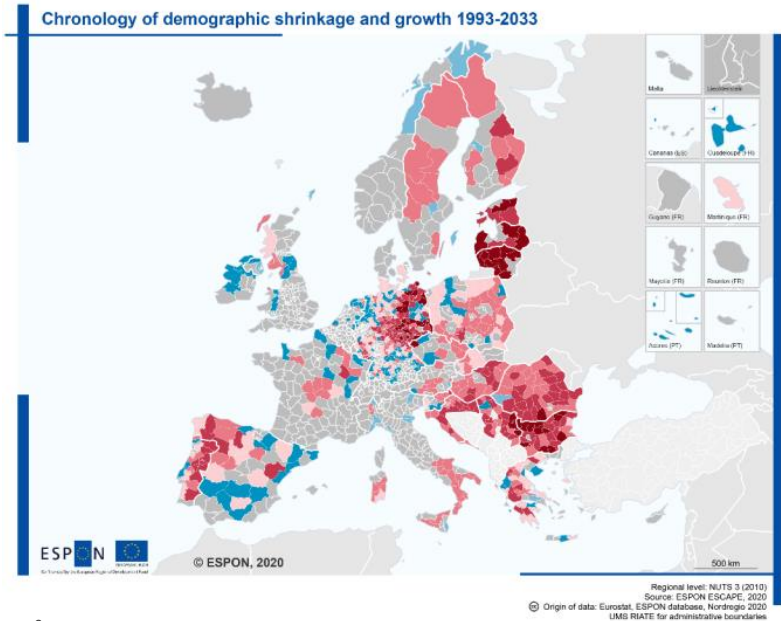
Enabling factors for rural revitalisation

Enrique Nieto
ENRD Contact Point

31 March 2022

Our starting point

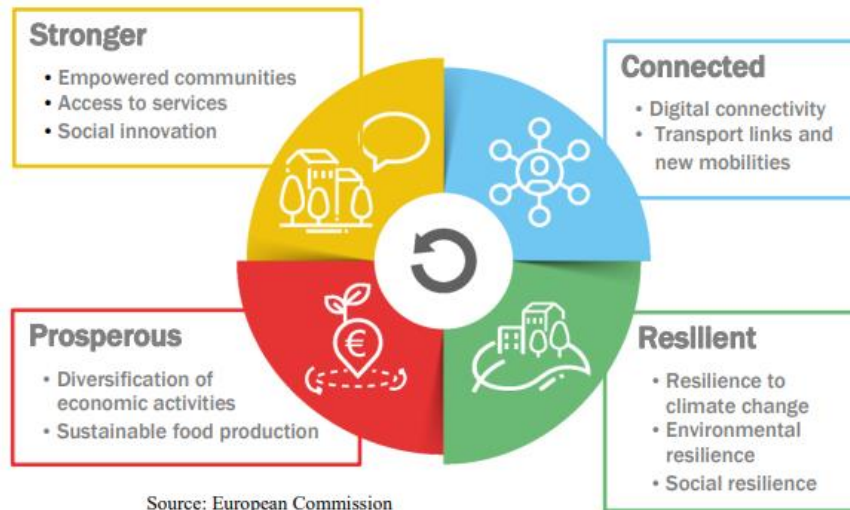
- **Challenges vary across the EU** and are multifaceted.
- **Rural depopulation** is recognised as a key challenge and the symptom of long-lasting problems
- Call for an **enabling environment** that supports action and development to revitalise rural areas



Source:
<https://www.espon.eu/sites/default/files/attachments/ESPON%20ESCAPE%20Synthesis%20Report.pdf#viewer.action=download>

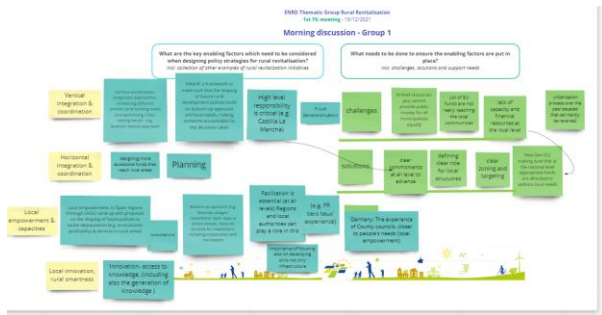
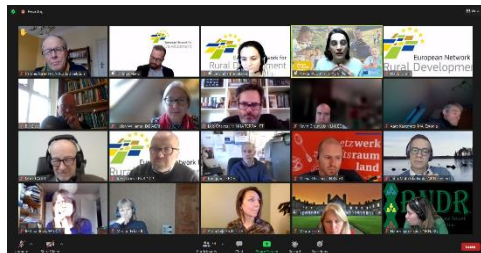
Our starting point

- **Extensive diagnosis** of the rural needs and areas of action (e.g. COM Staff WD, studies, reports, LDS,etc)
- The LTVRA outlines main **priority areas for rural action** to achieve the common ambition by 2040



What are the key enabling factors which need to be considered when designing policy strategies for rural revitalisation?

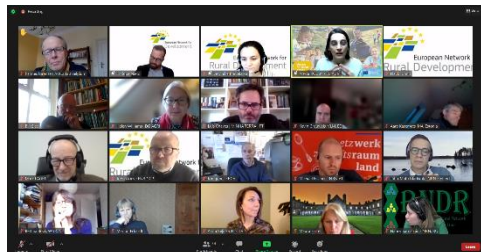
What needs to be done to ensure the enabling factors are put in place?



First Thematic Meeting

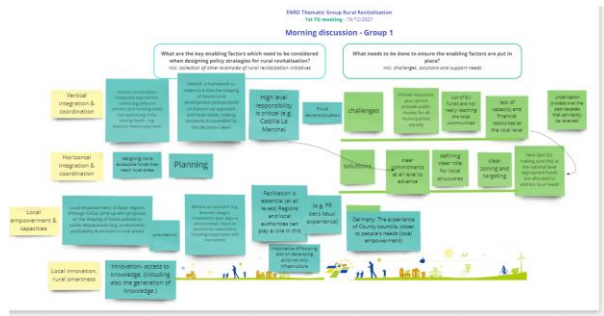


Draft TG WD: “Tool to support the design of policies for rural revitalisation”



ENABLING FACTOR	GUIDING QUESTIONS
INTEGRATED STRATEGIES	Building Block 1: Policy design, coordination and integration (Focus on national, regional levels)
	<p>Understanding different rural contexts to target action</p> <ul style="list-style-type: none"> To what extent is the policy(s)² based on a clear analysis of the different rural contexts and an identification of different types of rural areas with distinctive social, economic and environmental trends and realities (e.g. considering their remoteness or proximity to urban areas, demography and population trends and access to basic services, etc.)? To what extent does the policy(s) identify key needs and priorities of these different types of rural areas in a wide range of key thematic fields relevant for the future of rural areas (e.g. digitalisation, mobility, energy, basic services, sustainability, etc.)? <p>Scope of action and intervention</p> <ul style="list-style-type: none"> To what extent does the policy(s) enable rural areas and stakeholders to implement action to address challenges and seize opportunities in a wide range of key thematic fields relevant for the future of rural areas (e.g. digitalisation, mobility, energy, basic services, sustainability, etc.)? To what extent does the policy(s) include interventions that are targeted to respond to the needs and aspirations of the different rural contexts such as those with favourable conditions or those areas suffering from economic, environmental and social decline (e.g. implementing different taxation rates, investment offers and co-financing rates, additional technical assistance and capacity building support, etc.)? <p>Monitoring and evaluation</p> <ul style="list-style-type: none"> To what extent does the policy(s) and the interventions that follow from it set sufficient and relevant measurable objectives and targets in the key areas that affect rural development so as to allow monitoring the implementation, and which take account of the different rural characteristics and diversity? <p>Communication and building new rural narratives</p> <ul style="list-style-type: none"> To what extent are the policy(s) and results achieved communicated and disseminated in a way that changes the narrative to show the full potential of rural areas for society as a whole (including in urban areas)?

² Note: Building Blocks have been updated comparing to the draft Background Document on Enabling Factors presented at the 1st TG meeting to take into account the outcomes and feedback received during the meeting. The background document will be updated accordingly to reflect these changes.
³ It refers to the policy or relevant set of policies in the country or region that put in place specific interventions and measures that aim to support rural revitalisation. Some countries/regions have one overarching and integrated policy (e.g. Ireland) while in others there are several relevant policies aiming at rural revitalisation.



Enabling factors for rural revitalisation

Building Blocks

Enabling factors



STRUCTURES: Policy design, coordination and integration

- ▶ Integrated strategies
- ▶ Multi-level and inclusive governance structures



PEOPLE: Local empowerment, capacity building and innovation

- ▶ Local capacities for action
- ▶ Territorial Cooperation
- ▶ Innovation

Enabling factors for rural revitalisation



Policy design, coordination and integration

INTEGRATED STRATEGIES

- ▶ Rural diversity
- ▶ Broad scope of action (e.g. digitalisation, mobility, energy, basic services, sustainability, etc.)
- ▶ Targeted intervention
- ▶ M&E (objectives, targets, etc)
- ▶ Positive rural narratives

Enabling factors for rural revitalisation



Policy design, coordination and integration

MULTI-LEVEL AND INCLUSIVE GOVERNANCE STRUCTURES

- ▶ Political leadership from higher levels of government
- ▶ Effective coordination of relevant public authorities
- ▶ Synergies and complementarities among policies and funds
- ▶ Active multi-level stakeholder dialogue

Enabling factors for rural revitalisation



PEOPLE: Local empowerment, capacity building and innovation

LOCAL CAPACITIES FOR ACTION

- ▶ Local facilitation and animation for community engagement
- ▶ Enhance the human and social capital⁴ as well as technical capacity
- ▶ Flexible and adequate funding

Enabling factors for rural revitalisation



PEOPLE: Local empowerment, capacity building and innovation

TERRITORIAL COOPERATION

- ▶ Enabling cooperation among
 - Actors
 - Territories
- ▶ Rural-urban partnerships on equal basis

Enabling factors for rural revitalisation

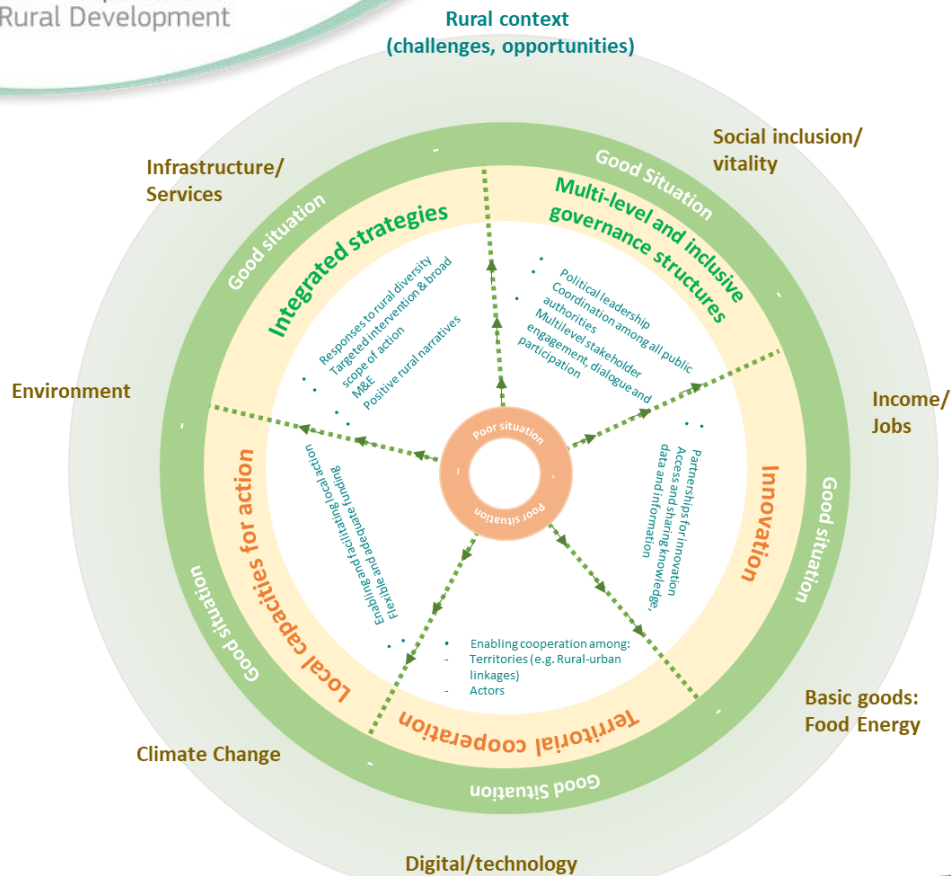


PEOPLE: Local empowerment, capacity building and innovation

INNOVATION

- ▶ Enabling partnerships for innovation
- ▶ Access to knowledge and connect with knowledge based stakeholders
- ▶ Networking and exchange of experiences

Enabling factors for rural revitalisation



Feedback from TG members

“this is a good document. The table is a good framework for revitalisation issues.”

- ▶ 9 TG members submitted feedback.
- ▶ Overall, the tool (questions, structure, examples) were positively received and outlined as useful.
- ▶ Main feedback was provided in adding examples and sources of information.
- ▶ Guiding questions: Same adjustments and additions of questions

Feedback from TG members

Guiding questions

- ▶ Change on the title: **Tool to support the design of policies for rural revitalisation.**
- ▶ Clarify what it is meant by Rural Revitalisation.
- ▶ Links to rural proofing: to what extent have unintended negative effects of other policies been inventoried, e.g. by way of rural proofing?
- ▶ Add a question regarding public services (enabling public authorities/local governments & private sector)
- ▶ Reinforce the aspects about enabling action by local actors (e.g. local strategies under higher level strategies, and use and decision making about funding).
- ▶ Focus on disadvantaged target groups;
- ▶ Incentives to research organisations to connect better at local levels

Maximise use of the tool

Remarks & Feedback on the tool?

- ▶ How do you see yourself/organisation/other actors **using this tool**?
- ▶ How can we encourage its use?
- ▶ How can this tool be used in the rural **revitalisation platform**?

Thank you for your attention

enrique@enrd.eu