



HOTEL GUIDE 2024

For reserving a hotel close to the "Covent Garden" evaluation premises

REA.A.5 – Expert Management and Support
January 2024

EUROPEAN COMMISSION

European Research Executive Agency (REA)
Unit REA.A.5 – Expert Management and Support

E-mail: REA-EXPERTS-ACCOMMODATION@ec.europa.eu

*European Commission
B-1049 Brussels*

HOTEL GUIDE 2024

For reserving a hotel close to the "Covent Garden" evaluation premises

This document is designed for informative purposes solely and for use by individuals engaged in an expert capacity by the European Institutions. It does not constitute any kind of advertising of any of the hotels presented, and inclusion herein is entirely on a voluntary basis. The European Research Executive Agency accepts no liability for the accuracy of the information and for the services provided by the hotels listed.

Manuscript completed in January 2024

Third edition

LEGAL NOTICE

This document has been prepared for the European Commission however it reflects the views only of the authors, and the European Commission is not liable for any consequence stemming from the reuse of this publication. More information on the European Union is available on the Internet (<http://www.europa.eu>).

© European Union, 2024



The reuse policy of European Commission documents is implemented by the Commission Decision 2011/833/EU of 12 December 2011 on the reuse of Commission documents (OJ L 330, 14.12.2011, p. 39). Except otherwise noted, the reuse of this document is authorised under a Creative Commons Attribution 4.0 International (CC-BY 4.0) licence (<https://creativecommons.org/licenses/by/4.0/>). This means that reuse is allowed provided appropriate credit is given and any changes are indicated.

For any use or reproduction of elements that are not owned by the European Union, permission may need to be sought directly from the respective rightholders.

1. Introduction

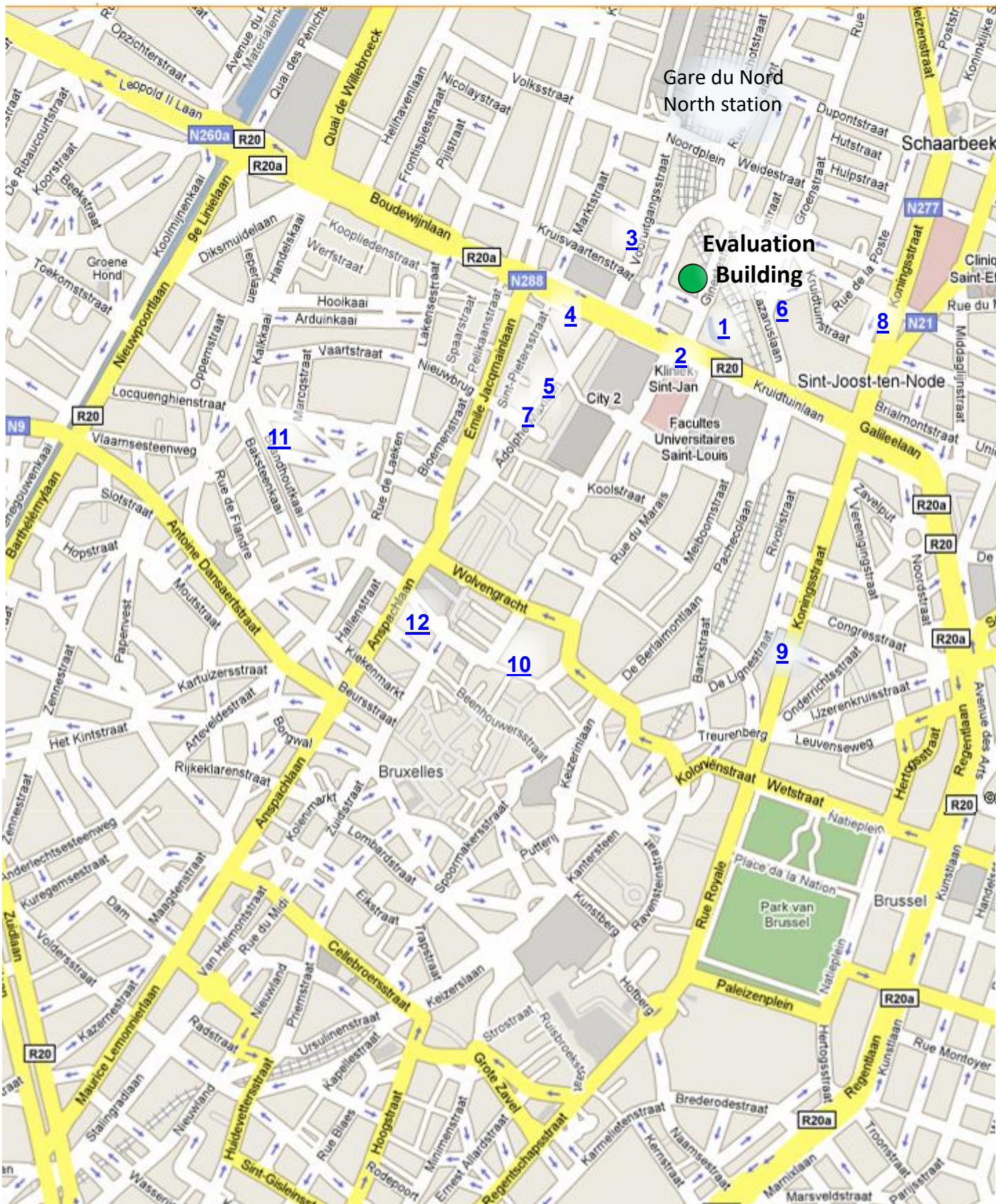
- REA has prepared this booklet of hotels close to the Covent Garden evaluation premises on Place Charles Rogier to facilitate your stay in Brussels. In order to ensure that your stay is comfortable, the list includes hotels in the neighbourhood offering special rates and flexible cancellation policies, which can be more generous than the rates available through other channels.
- This document is for information purposes only. It does not constitute advertising of any kind for the hotels presented in the booklet. REA cannot be held responsible in case of non-respect of the rates and/or terms and conditions provided in this guide, given that inclusion is on a voluntary basis and there is no binding agreement between the institutions and the hotels listed. Nevertheless, if you encounter any issues, please let us know via the following email address: REA-EXPERTS-ACCOMMODATION@ec.europa.eu
- Please book via the process specified by each hotel in order to ensure that you receive the special rates and conditions. **Do not forget to mention the reservation code, if applicable.**
- As the city hosts several EU and International institutions, the availability of rooms can become limited at very short notice or due to unforeseen events. As it is not always possible to anticipate room availability in advance, please make your travel and accommodation arrangements as soon as your contract has been signed by both parties and your call or topic coordinator has confirmed the exact dates of the meeting.
- Some of the suggested hotels in the hotel guide offer the rates with a Non-Last Room Available (NLRA) policy, which means that whenever a hotel reaches a certain percentage of occupancy, the agreed rates will no longer be offered.
- Your expenses, including accommodation, are limited to the amounts indicated in your contract. Any costs beyond the amounts provided for are borne by the expert.

2. Hotel list – listed by proximity to the Evaluation building

	Hotel	Price/Room/Night	Breakfast
1	Indigo	€153.50 Standard room €183.50 Deluxe room	€20
2	Double Tree by Hilton	€153.76 Standard Room	€26
3	Progress hotel	€135 Superior Single Room €145 Executive Single Room	€15
4	Thon Hotel	€140 Standard Room* *breakfast included as of 4 nights	€15
5	Le Plaza	€142 Classic Room €182 Deluxe Room	€20
6	The Hoxton	€160 Cosy Room	Included
7	NH Collection Brussels Centre	€155 Standard Room	€20.90
8	Nhow Brussels	€152 Standard Room	€24.90
9	Motel One	€109 Standard Room in Jan 2024 €119 Standard Room from Feb 2024	€16.50
10	The Dominican	€155 Deluxe Room €180 Courtyard Room	€27
11	Citadines Sainte Catherine	€129 Studio €164 Apartment	€17
12	Adagio	€167 Studio (1-3 nights) €128 Studio (4-9 nights)	€19

Prices in this table do not include the city tax of €4.24 per night per room.

3.Map



Gare du midi/South station



HOTEL
INDIGO

AN IHG HOTEL
BRUSSELS CITY

153.50 EUR*
per night

HOTEL INDIGO BRUSSELS - CITY IS THE IDEAL HOME BASE WHEN STAYING IN THE CAPITAL OF EUROPE!

With the botanical garden located at our doorstep and other major tourist attractions at walking distance, and the European Commission Covent Garden building right next door.

***Included in rate:**

Complimentary Wi-Fi
Access to fitness and sauna
In room coffee and tea amenities
Green environment
Water fountains

***Special offer:**

15% discount on F&B and laundry services
Breakfast at special rate of €20 p.p.

[CLICK HERE TO BOOK](#)

HOTEL INDIGO BRUSSELS -CITY

W: indigobruusselscity.com

E: reservations@indigo.bruussels

T: 02 600 12 10

Be part of

IHG

See the

Visualiser

Be

Sustainable



RESERVATION FORM 2024

Identification code for your reservation: DG Research, Expert Covent Garden

Mr. Mrs.

First name:

Last name:

E-mail address:

Arrival date: Departure date: Nights:

Rates are **NLRA** - Non-Last Room Availability

Single Occupancy

- Standard room: EUR 153.50 per night **, city tax excluded *
 Add breakfast for an additional 20 EUR per night
- Premium room: EUR 183.50 per night **, city tax excluded *
 Add breakfast for an additional 20 EUR per night

Double Occupancy Add breakfast for an additional 20 EUR per night, second person

Comments:

- * Rates are including VAT and service charges, city tax excluded (EUR 4.24 per room, per night)
- ** If special rate (NLRA) is not available, **we offer 20% (LRA) on best available rate of that day**
- *** As from 4 nights - complimentary upgrade towards premium room (upon availability)
- **** 15% discount on all food and beverage as well as laundry services during the stay

Black-out period	Dates	Rates
Isicem	Monday 18/03/24 until Thursday 21/03/24	20 % discount

Guarantee and payment

Reservation guaranteed by **CREDIT CARD:**

- VISA MasterCard Eurocard American Express

Name Card Holder:

Expiry Date:

Credit Card Number:

IHG Rewards Club:

Please send this from back towards our Reservation Department

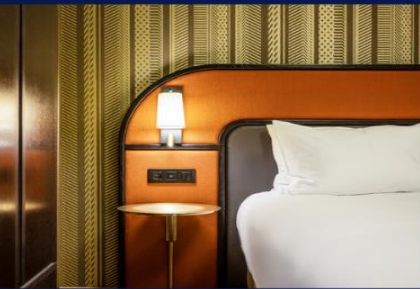
reservations@indigo.brussels

+32 2 600 12 10



DoubleTree by Hilton Brussels City

Your authentic hospitality partner in Brussels.



Bedrooms

With recently updated Art Déco-era styling, elegant parquet floors, high-ceilings, fabulous premium bedding and a view on a quiet courtyard, our rooms represent the very best of comfort and style.

Amenities include complimentary WiFi, a Lavazza coffee machine, 55 inch smart HDTV, mini fridge, and a laptop sized safe. Your booking includes complimentary access to the sauna & the fitness on the 3rd floor.

[360° Room Tour](#)

Brasserie

In our restaurant and bar we serve a cross-cultural menu with an emphasis on healthy, tasty and honest food. Chosen from a range of Belgian classics brought to life with signature ingredients from across the globe, we integrate as many seasonal ingredients as possible from our local and trusted suppliers.

For the lunch break, enjoy our Treat of the Day for just €25 (starter + main course).

[Book a table](#)



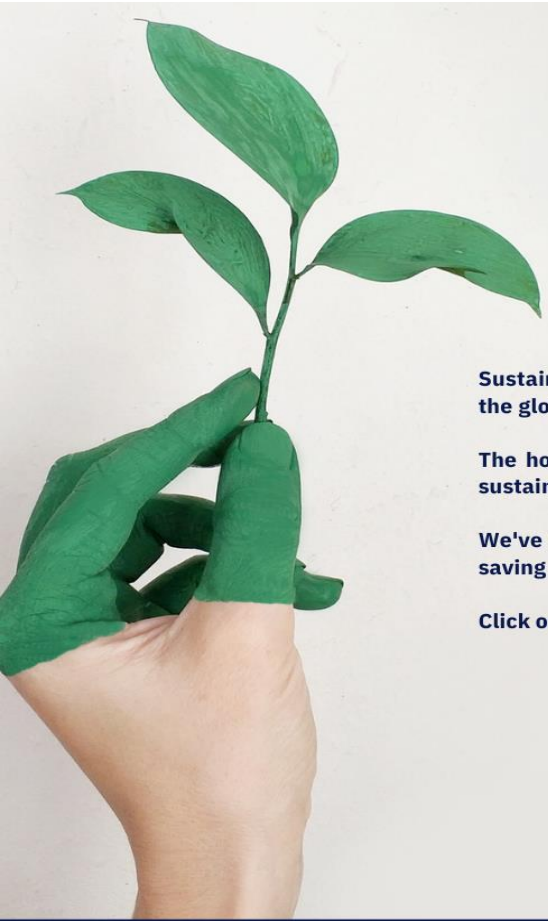
Experiences

At our hotel, we value creating memorable stories with our guests and strive to help them discover the heart and soul of this beautiful city.

Here's what we offer to our beloved guests:

- Guided Tour every Saturday at 2pm
- Belgian Beer Tour every Friday at 6pm
- Belgian Whisky Tasting in our bar
- 15% off on the Brussels Museum Pass

[More info](#)



A hotel committed to a more sustainable future.

Sustainability is more important than ever before, and it's a top priority for businesses around the globe.

The hotel industry has recognized this, and we're proud to be leading the way in implementing sustainable practices that reduce our impact on the environment.

We've taken a comprehensive approach to minimize our carbon footprint, from using energy-saving LED lighting to eco-friendly cleaning products.

Click on the button below to discover more about our sustainable actions.

[Discover more](#)

How to Book?

+32 2 274 58 44
reservations@doubletreebrussels.com

Cancellation policy

4pm | day of arrival

Rates

153.76€ | Guest Room

Rate per room per night
 Upon availability (NLRA)
 Excluding city tax of 4,24€ per room, per night.
 When rate not available: 10% discount on best available rate will apply.

26€ | Full American Breakfast
25€ | Supplement Deluxe Room

[Book your stay](#)

Black Out Dates

ISICEM
18 - 21 Mars 2024



5 minutes walk from North train station
 1 minute walk from REA premises, metro, bus & tram services
 15 minutes walk from the historic city centre
 2 minutes walk from the main shopping street
 14 km from Brussels Airport



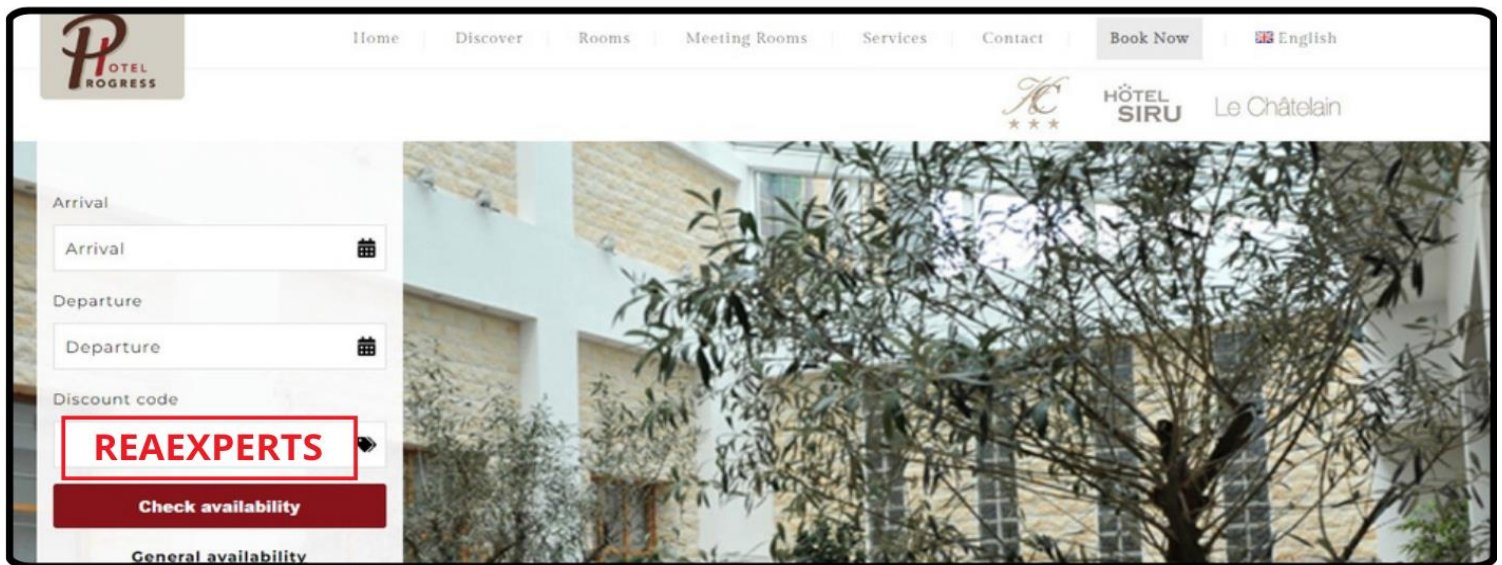
REA EXPERTS AT COVENT GARDEN

RESERVATION GUIDE

Follow this link: <https://progresshotel.be>

and enter your discount code:

REAEXPERTS



PREFERENTIAL RATE:

Superior Single

Room: 135€

Executive Single

Room: 145€

Friday to Sunday: 135€

This rate includes service, tax, free and unlimited Wi-Fi. Nespresso coffee machine and a selection of teas in room. Buffet breakfast not included (extra 15€ per person per day). Local taxes and charges not included.

Free access to the Fitness Center.

Last room available guaranteed.



In case of cancellation later than 2pm before arrival (by e-mail) a fee equivalent to the first night will be charged.

Please note that these rates are not available from 18 to 22 March 2024.

If you need any assistance: res2@progresshotel.be +32 (0)2 205 17 08

YOUR PREFERRED RATE AT THON HOTEL

BRUSSELS CITY CENTRE



[CLICK](#)
[HERE TO](#)
[BOOK](#)

EXPERT COVENT GARDEN RATES 2024

- € 140 per night excluding breakfast
- € 155 per night including breakfast
- € 140 per night including breakfast as from 4 nights

Or send us an email to reservation@thonhotels.be mentioning “Expert Covent Garden”

CONDITIONS

- Wi-fi and bottle of water
- City tax € 4.24 per night, per room is excluded
- You can cancel your booking free of charge up to 16:00 local time on the day of arrival
- Early departure policy: 100% of the stay will be charged if no notification. If the notification is made the day prior to new departure date before 16:00, no charges will be applied
- Rates are valid until January 31, 2025 and will not be available during the European Week of Regions and Cities (to be determined)
- Rooms are NLRA (non-last room availability)

GOOD TO KNOW

- 200 meters walk from Expert Covent Garden
- Metro station in front of hotel entrance
- 600 meters to Brussels North Station
- 10-minutes walking distance from Grand Place
- Easy access to Brussels Airport
- Pedestrian shopping street and shopping mall just across the street

HOTEL OVERVIEW

- Relax in our panoramic sauna and fitness on the 29th floor
- Grab & Go, fresh food bar and Game room
- 454 rooms (339 standard, 84 business, 27 superior, 4 suites)
- Green reward: when staying more than one night and by hanging the “Do not clean my room” card, you will receive a €5 token to donate to a charity of your choice or to redeem at our O – Bar

Thon Hotel Brussels City Centre, Bolwerklaan / Avenue du Boulevard 17, 1210 Brussels

[Check the location here](#)



Le Plaza
BRUSSELS

Book online at
<https://www.leplaza-brussels.be/en/coventgarden>

Expert Covent Garden Rate

Classic room 142 €

Deluxe Room 182 €

Free Wi-Fi access all throughout the Hotel

American buffet breakfast is at 20 € instead of 29 €



Please mention « Expert Covent Garden » when making your booking.
or book online at <https://www.leplaza-brussels.be/en/coventgarden>

!

Rates are per room, per night and include LRA, VAT. and are valid until 31/12/2024. City Tax is 4.24 € per room per night.

Reservations can be cancelled free of charge until 4PM the day of arrival.

Early departure free of charge if announced before 4pm the day prior to departure.



Bd Adolphe Maxlaan, 118-126
B -1000 Brussels

T. +32 (0)2 278 01 00
F. +32 (0)2 278 01 01

www.leplaza.be
reservations@leplaza.be



Expert Covent Garden

Reservation Form

Special rates for "Expert Covent Garden" 2024

Name: First Name:
Arrival Date: Departure Date:
Fax : Telephone :
Email:

- Classic Room 146.24 €
- Classic Room with American Buffet Breakfast 166.24 €*
- Deluxe Room 186.24 €
- Deluxe Room with American Buffet Breakfast 206.24 €*

Reserve now and get American Buffet Breakfast at 20 € instead of 29 €.

The above mentioned rates **include Wi-fi**, free access to the **fitness**, local taxes, VAT, service charge and are per night. *For double occupancy 20 € will be added for the extra breakfast.

I wish to guarantee the room with the following credit card:

Type of card: Expiry Date:/...../.....

Card number:

Reservation is guaranteed and will be held overnight. In the event of a non arrival, the first night will be charged at the agreed rate, as cancellation fee.

Signature: Date:

Kindly return form to reservations@leplaza.be or by fax to + 32 2 278 06 72



The Hoxton, Brussels
Square Victoria Régina 1, 1210 Saint-Josse-ten-
Noode, Belgium

the hoxton



Rates Just For You!

Cosy Room **€160**

Click here and use code **REA** on *thehoxton.com* or contact your travel team

Cosy Room

Spend the night with us in Brussels, in one of our 70s-inspired Cosy rooms. Rounded forms fill the room, from bedside lamps to chairs, taken straight out of the 'decade that style forgot'. Everyone gets water, fresh milk, coffee and tea, and a fridge that's yours to stock with snacks and drinks from our Hox Shop.



Free cancellation before **2pm**, 48 hours prior to arrival | Valid until **31.12.2024**

Breakfast included, VAT included, City Tax excluded Do you need help? Contact book.brussels@thehox.com



The Hoxton, Brussels
 Square Victoria Régina 1, 1210 Saint-Josse-ten-
 Noode, Belgium

the hoxton



The Hoxton, Brussels

Occupying a brutalist-style tower building and the former European headquarters of IBM, The Hoxton, Brussels is a hotel with 198 rooms, a lofty double height lobby, bar and restaurant and a rooftop terrace with all the views. Ideally situated within the Botanical gardens and just a short walk from the historical city centre. Catch a concert, go to local gems for a beer or two, for some shopping or antiques. We also have all the major museums around the corner, from Rubens at the Royal Museum to the latest contemporary art at MIMA.



Cantina Valentina

A Peruvian-inspired restaurant specialising in a modern interpretation of the food and drink served across the country from Lima to Iquitos.



Tope

A rooftop bar with views over Brussels, serving Mexican-inspired flavours and punchy cocktails.





Contract 2024 at NH Collection Brussels Centre

NH Collection Brussels Centre is situated in the heart of Brussels. Walking distance from the famous Grand Place and the Opera House “La Monnaie”, as well as the historical and shopping district of the city. The hotel is 10 minutes from the Congress Centre and the EU quarter.

The Grand Place, “Square Brussels” Convention Centre and Manneken Pis are all but a stone’s throw from the hotel’s doorstep, putting guests in the centre of Belgium’s awe-inspiring architecture and welcoming culture. Whether meeting for important business gatherings or a sumptuous Belgian weekend, it’s all here. Welcome to NH Collection Brussels Centre.

€155.00 for a standard room –Room only*
including VAT, complimentary Wi-Fi and access to the gym.

6PM day CXL policy

Breakfast: €20,90 for pre-booked price
€22,90 check-in/ check-out price

Hotel facilities & services

- Guest relations officer on premises
- Amazing breakfast on the 9th floor
- Nespresso machine & bottle of water in the room
- One piece iron for free
- Express laundry
- Complimentary Wi-Fi
- Complimentary access to the gym
- Green Stay

Reservation details

To book your room, call +32 273 41 79 and refer to the **“Research Executive Agency - REA”** or **2021204743** client.

Or e-mail us at reserveringen@nh-hotels.com

BOOK HERE

City tax excluded: €4,24 per room per night

*This special rate is not bookable during the Blackout Periods 2024 :18-20 March\7-9 October During those periods, a discount 15-22% off on the best available rate will apply.

NH COLLECTION BRUSSELS CENTRE - Boulevard Adolphe Max 7 – 1000 Brussels - Belgium



Contract 2024 at NhowBrussels

Ready to find your inner artist in the most vibrant creative hub ever? Well, this is your chance –nhow Brussels Bloom will offer you an entirely new experience!

The hotel is conveniently located in the lively Botanique area of the city, just 15 minutes by train from Brussels Airport and 10 minutes by foot from Brussels North station.

The room design follows the creativity inspired concept of the hotel. The sleeping areas of the rooms have a sleek minimalistic design, reminiscent of a blank canvas, while the entrance to each room surprises with an explosion of color. On the other hand, the bathrooms were designed in the image of a photography darkroom.

€152.00 for a standard room –Room only*

Including VAT -complimentary Wi-Fi and access to the gym.

6PM day CXL policy

Breakfast: €24.90 check-in/check-out price

Hotel facilities & services

- High speed Free Wi-Fi
- Gym & Business Lounge
- Coffee and bottle of water in the room
- Green stay
- 1 free drink when choosing a green stay

Reservation details

To book your room, call +32 (0)2 273 41 79 and refer to the **"Research Executive Agency -REA"** or client **2021204743**.

Or e-mail us at reserveringen@nh-hotels.com

**BOOK
HERE**

City tax is excluded: €4.24 per room, per night.

This special rate is not bookable during the following Blackout periods in 2024: March 18th-20th and October 7th-9th. During these periods, a discount of 15-22% on the best available rate will apply

nhow BrusselsBloom - Rue Royale 250 - 1210 Brussels - Belgium



Motel One Brussels – You will love it!

Your turquoise Design HOME in the HEART of Europe’s capital

- 490 modern Design rooms
- 24-hour Reception,
- ONE Bar & Lounge Service 24/7
- Outside Lounge & Garden
- Breakfast Buffet at 16,50 EUR
- free & unlimited Wi-Fi
- Ironing Room
- Free cancellation until 6pm on day of Arrival Free cancellation until 11am on stay over days public parking “Indigo Parking Royal” (200 spaces) right below the hotel.
- LRA Rate & NO BLACK OUT DAYS
- Rates valid until Jan 31, 2025



YOUR 2024 REA FLAT RATE

*excluding breakfast & city tax:

€109 EUR per night

for a Motel One Standard Room (Single occupancy) in January 2024

€119 EUR per night

for a Motel One Standard Room (Single occupancy) from February 2024 on

Supplements for higher category rooms (per night) :

Garden room + €10 / Business room + €30/ Balcony room + €50



Perfectly located on RUE ROYALE 120 next to the Royal Park,
just behind the Brussels Cathedral
2 stops to REA (tram/metro)

METRO: Parc / Park (3 minutes walk)

TRAM: Place du Congrès (2 minutes walk)

TRAIN/Airport Shuttle :

GARE Centrale (5 minutes walk)

Motel One Belgium SPRL

Motel One BRUSSELS

Rue Royale 120
B-1000 Brussels

tel: +32/2/209 61 - 10

fax: +32/2/209 61 - 11
brussels@motel-one.com
www.motel-one.com

www.motel-one.com

Motel One Brussels

Rue Royale 120, 1000 Brussels

Tel:+32/2/2096110, Fax:+32/2/2096111

E-Mail: brussels@motel-one.com

Directors: Daniel Müller, Robert Wildling

TVA/BTW BE 0849950127



HOW to RESERVE YOUR MOTEL ONE ROOM:

beONE program & REA partner code

- Register ONCE to our beONE loyalty program on our website <https://booking.motel-one.com/de/register> and save the REA partnercode **REAE491979C** in your beONE profile
- Book Motel One Brussels ONLINE exclusively on www.motel-one.com logged in to your beONE profile as business traveller **travelling on business* in order to have access to the REA flat rate & beONE benefits

By e-mail:

- Send e-mail* directly to the Motel One Brussels reservation department brussels@motel-one.com mentioning as booking password **REA Research Agency Flat Rate 2024**

** If you use your personal email to make your reservation, please CC REA-EXPERTS-ACCOMMODATION@ec.europa.eu*

Motel One Belgium SPRL

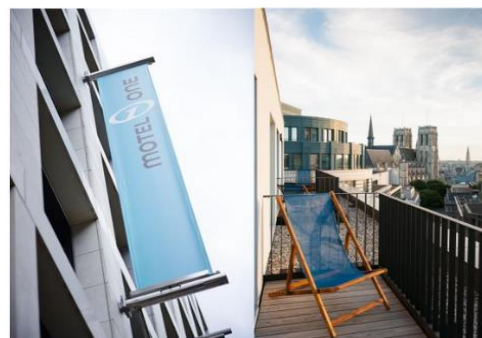
Motel One BRUSSELS

Rue Royale 120
B-1000 Brussels

tel: +32/2/209 61 - 10

fax: +32/2/209 61 - 11
brussels@motel-one.com

www.motel-one.com



www.motel-one.com

Motel One Brussels

Rue Royale 120, 1000 Brussels

Tel:+32/2/2096110, Fax:+32/2/2096111

E-Mail: brussels@motel-one.com

Directors: Daniel Müller, Robert Wildling

TVA/BTW BE 0849950127



THE
DOMINICAN
BRUSSELS

D A MEMBER OF DESIGN HOTELS™

The Dominican, the first member of **Design Hotels™** in Belgium, is a destination for elegance in the **centre of Brussels.**

Located behind the theatre **La Monnaie, off Grand Place,** its 150 stylish rooms, 3 multifunctional meeting rooms, private courtyard, and bustling Lounge Bar combine to ensure indulgent hospitality.



The Dominican will provide the best services and offers you moments to indulge yourself:

- Complimentary **WIFI** available in the entire hotel.
- **Breakfast buffet** with à la carte options at € 27,00.
- Check-in as from 15h00, Check-out before 11h00.
- Free cancellation until 6 PM on the day of arrival.
- Elaborate choice of a la carte dishes in the restaurant or delivered in your room.
- **Fitness centre** with **Sauna** and **Hammam** included during your stay.
- 4-minute walk from the **central train station** or **secure underground public parking** at 150 meters.
- **10% discount** on diner at our restaurant in our Grand Lounge.





THE
DOMINICAN
BRUSSELS

 A MEMBER OF DESIGN HOTELS™

Our Rooms...

Type 1: Deluxe room €150.00 single or double

Type 2: Courtyard room €180.00 single or double

(prices are exclusive, non-negotiable and only bookable according to availability.)

Black-out dates:

27/01/24 – 05/02/24 : BRAFA

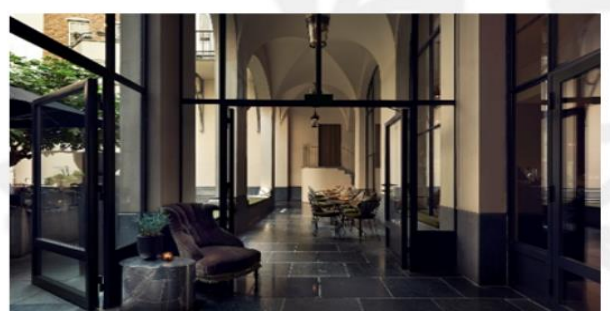
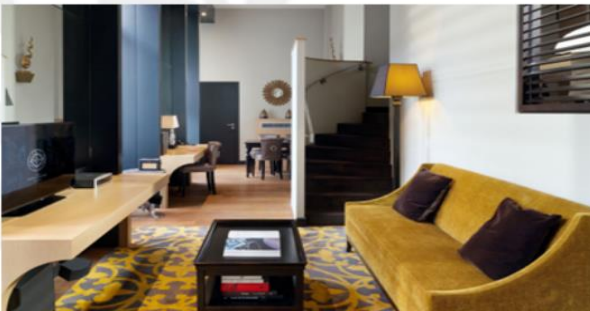
18/03/24 - 23/03/24: ISICEM

Prices are valid from 01/01/2024 until 31/12/2024.

Early check-out is included in the negotiated rate.

City Tax of €4.24 is excluded.

All other taxes, VAT and services are included.



For reservations please contact:

Phone: +32 2 203 08 08

E-mail: reservations@thedominican.be

Rue Léopold / Leopoldstraat 9 1000 Brussels Belgium

+32 (0)2 203 08 08

info@thedominican.be

citadines

APART' HOTEL

Citadines Sainte – Catherine Brussels

Expert Covent Garden preferential rates 2024 (valid until 31.01.2025)



Services & Equipment

Furnished & Renovated Studios & Apartments

Fully-equipped kitchen & bathroom

Weekly full housekeeping service in your accommodation

Free & unlimited access to our Business Corner

Private car park

Free water, coffee & tea 24/7 in our lobby

Free High speed internet access & Wi-Fi

24h-Reception & **Secured** entrance

Number of nights	Studios (25m ²) 1-2 pers	Apartment (40m ²) 1-4 pers	Cancellation/ Early departure Policy
1-6 nights	€ 129	€ 164	Possible to cancel until 6pm day of arrival
7-29 nights	€ 104	€ 135	Possible to cancel until 3 days before arrival
+30 nights	€ 72	€ 85	Possible to cancel until 7 days before arrival

Rates are per night per unit (VAT included). Breakfast and City Tax (€4.24 per unit per night) excluded.

Breakfast available at the rate of €17 per person per day.

Contact:

Please send your request for reservation to: stecatherine@Citadines.com // corporate@Citadines.com

OR

Book online on www.discoverasr.com with your corporate code: **ExCo6341**



Citadines Apart'Hotel is managed by The Ascott Limited, a member of CapitaLand. It is the largest global serviced residence owner-operator in Asia Pacific, Europe and Gulf region, managing the Ascott, Citadines and Somerset brands in over 70 cities across more than 20 countries

Adagio Brussels Grand Place

REA



Key strengths

- Located in the very heart of the city, 800m from the Grand-Place.
- The freed the metro and close to Brussels Midi railway station.
- Located in a dynamic neighbourhood, close to shopping arcades. Ideal for exploring the charms of Brussels

Our offer:

	Arrival	Departure	Nbr of apart	Nbr of nights	Unit price TTC
1-3 Nights - Studio Single RO 4-9	1/ 01/ 24	31/ 12/ 24	1	1	€ 167.00
Nights - Studio Single RO 10-27	1/ 01/ 24	31/ 12/ 24	1	1	€ 128.00
Nights - Studio Single RO 28+	1/ 01/ 24	31/ 12/ 24	1	1	€ 109.00
Nights - Studio Single RO 1-3	1/ 01/ 24	31/ 12/ 24	1	1	/
Nights - Apartment RO	1/ 01/ 24	31/ 12/ 24	1	1	€ 200.00
4-9 Nights - Apartment RO 10-27	1/ 01/ 24	31/ 12/ 24	1	1	€ 167.00
Nights - Apartment RO 28+	1/ 01/ 24	31/ 12/ 24	1	1	€ 142.00
Nights - Apartment RO Brussels	1/ 01/ 24	31/ 12/ 24	1	1	/
City Tax	1/ 01/ 24	31/ 12/ 24	1	1	€ 4.25

These rates are valid for an individual request.
 These rates are not valid during the blackout dates 2024 :
 12/03 - 15/03 (DIA) ; 19/03 - 22/03 (ISICEM) & 07/10 - 11/10 (Open Days)

line 1, 5 De Brouckère station - 1min
 line 66 De Brouckère station - 3 min
 line 4, 3 De Brouckère station - 1min

Railway Central Station-0.7km-10min
 Zaventem Brussels International Airport - 17 km

[CLICK HERE TO BOOK](#)

Services

- Breakfast Buffet(1)
- Wi-Fi
- Laundry
- Meeting room
- Fitness
- Dry-cleaning service

*For stays of 8 nights or more, a weekly housekeeping service is included. For stays up to 7 nights, optional housekeeping service available on request.
 Additional paid services: "Bedding and Towels" or full housekeeping service.

(1)Charge applies. (19€/ person)

Adagio®, joint venture between



ADAGIO BRUSSELS GRAND PLACE

20BoulevardAnspach
 1000Brussels
 Belgium

Tel. :+32 (0)2 212 93 00

Fax:+32(0)22129301

Mail:h7242@adagio-city.com

Herefor you

| adagio-city.com



Adagio Brussels Grand Place

REA



Corporate conditions :

Booking organisation/apartments

The detailed list of Participants must be sent to the Aparthotel at the latest 15 days before arrival. Any amendments related to the type of apartment booked, must be notified in writing to the Aparthotel and confirmed by these. The handover of the keys shall take place after 17:00 on the arrival date. On the departure date, the keys shall be returned before 10:00.

Modification / Cancellation policy

Any modification or cancellations must be sent in writing to the Aparthotel.

Any amendment to the duration of the stay, longer or shorter, may result in a revision of the rates.

In the event of early departure or late arrival, the total amount of the stay initially planned shall be invoiced.

Cancellation fees, total or partial, will be calculated as follows:

Length of stay	Cancellation policy
1 -3 nights	Cancellation free of charge up to 18:00 (local time) on the day of arrival. After this date, the hotel will charge for the first night.
4 -9 nights	Cancellation free of charge up to 1 day before arrival, 12:00 (local time). After that, the hotel will charge for the first 2 nights.
10 -27 nights	Cancellation free of charge up to 3 days before arrival, 12:00 (local time). After that, the hotel will charge for the first 4 nights.
28 nights and more	Cancellation free of charge up to 3 days before arrival, 12:00 (local time). After that, the hotel will charge for first 6 nights.

GETTING IN TOUCH WITH THE EU

In person

All over the European Union there are hundreds of Europe Direct information centres. You can find the address of the centre nearest you at: https://europa.eu/european-union/contact_en

On the phone or by email

Europe Direct is a service that answers your questions about the European Union. You can contact this service:

- by freephone: 00 800 6 7 8 9 10 11 (certain operators may charge for these calls),
- at the following standard number: +32 22999696, or
- by email via: https://europa.eu/european-union/contact_en

FINDING INFORMATION ABOUT THE EU

Online

Information about the European Union in all the official languages of the EU is available on the Europa website at: https://europa.eu/european-union/index_en

EU publications

You can download or order free and priced EU publications from: <https://op.europa.eu/en/publications>. Multiple copies of free publications may be obtained by contacting Europe Direct or your local information centre (see https://europa.eu/european-union/contact_en).

EU law and related documents

For access to legal information from the EU, including all EU law since 1952 in all the official language versions, go to EUR-Lex at: <http://eur-lex.europa.eu>

Open data from the EU

The EU Open Data Portal (<http://data.europa.eu/euodp/en>) provides access to datasets from the EU. Data can be downloaded and reused for free, for both commercial and non-commercial purposes.

